



Compressor
Voltage Code : GS

AE4440Y-GS1A

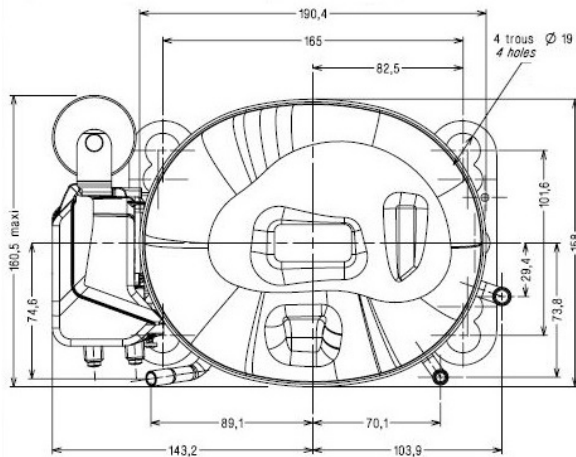
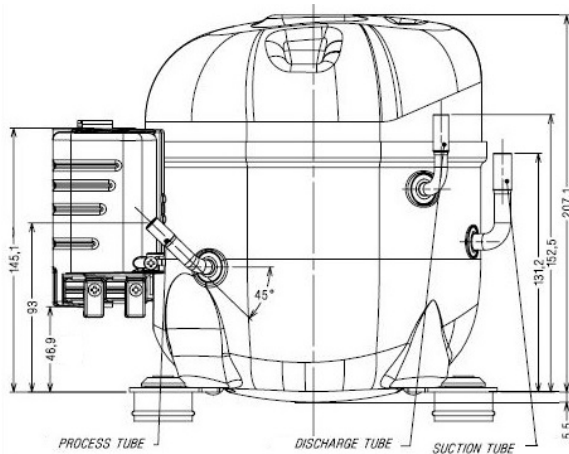
High Temp. Commercial (HP)

220V 1~ 50 Hz / 60 Hz

R134a / R513A

AE4440Y-GS1A

Conditions	Frequency	Nominal Cooling Capacity		Sound Power ISO3745 / ISO 3743-1
		Watts	BTU/h	
CECOMAF / R134a	50 Hz / 60 Hz	888 / 1065	3028 / 3632	54 dBA
CECOMAF / R513A	50 Hz / 60 Hz	904 / 1085	3084 / 3699	54 dBA



* CECOMAF : T°Cond. 55.0°C / T°Evap. 5.0°C / T°Return gas temp.. 32.0°C
T°Subcooling. 0.0K

Certificates :



Displacement (cc)	10,3
Net Weight (Kg)	11.4
Oil Quantity (cc)	280.0
Oil Type	Polyolester
Expansion Device	Capillary_Tube/Expansion_Valve
Cooling	Fan
Main Winding (Ohm)	1.6
Start Winding (Ohm)	3.6
Current	
RLA (A)	3 3
MCC (A)	4.9
LRA (A)	18.4
Electrical Equipment	CSIR
Overload	T89006
Time Check	5.5s - 17s / 12.7 A
Open Temp	135° C
Close Temp	52° C
Start Capacitor	72 µF / 330 V
Current Relay	RP50**
Pick Up	8.50A
Drop Out	7.15A
Refrigerating connection for	
Suction Tube	7.9 (5/16")
Discharge Tube	6.35 (1/4")
Process Tube	6.35 (1/4")

Note : Tecumseh reserves the right to change information contained in this document without notification.



Tecumseh

AE4440Y-GS1A	Tension GS : 220V 1~ 50 Hz / 60 Hz
---------------------	---

Les performances sont données dans les conditions CECOMAF :	Gaz aspirés :	32.0 °C
Condition Dew	Sous refroidissement :	0.0 K
The performance data are in CECOMAF conditions :	Return gas :	32.0 °C
Dew Condition	Subcooling :	0.0 K

50 Hz R134a											
											N°3062
4 T condensation	5 T évaporation	(°C)	-25	-20	-15	-10	-5	0	5	10	15
30	1 P frigorifique	(Watt)	291	386	502	641	807	1003	1232	1498	1804
	2 P absorbée	(W)	217	238	259	278	295	310	322	330	334
	3 I absorbée	(A)	2.52	2.55	2.59	2.63	2.66	2.69	2.72	2.76	2.79
40	1 P frigorifique	(Watt)		346	452	578	726	902	1107	1345	1620
	2 P absorbée	(W)		250	275	300	323	346	366	384	399
	3 I absorbée	(A)		2.55	2.61	2.67	2.73	2.79	2.84	2.90	2.96
50	1 P frigorifique	(Watt)			395	505	634	786	964	1172	1414
	2 P absorbée	(W)			290	320	349	379	407	434	458
	3 I absorbée	(A)			2.62	2.71	2.79	2.88	2.96	3.04	3.12
60	1 P frigorifique	(Watt)				429	535	661	810	985	1190
	2 P absorbée	(W)				339	375	410	446	481	514
	3 I absorbée	(A)				2.75	2.86	2.97	3.07	3.18	3.29

60 Hz R134a											
											N°3062
4 T condensation	5 T évaporation	(°C)	-25	-20	-15	-10	-5	0	5	10	15
30	1 P frigorifique	(Watt)	350	472	612	775	963	1182	1434	1723	2054
	2 P absorbée	(W)	232	264	294	324	354	385	419	457	499
	3 I absorbée	(A)	1.92	2.01	2.10	2.20	2.31	2.42	2.54	2.67	2.80
40	1 P frigorifique	(Watt)		416	551	704	881	1084	1317	1585	1891
	2 P absorbée	(W)		276	312	347	381	417	454	494	537
	3 I absorbée	(A)		2.02	2.15	2.27	2.41	2.55	2.70	2.86	3.02
50	1 P frigorifique	(Watt)			473	611	768	949	1157	1396	1670
	2 P absorbée	(W)			326	369	410	451	493	537	585
	3 I absorbée	(A)			2.19	2.35	2.52	2.69	2.86	3.05	3.24
60	1 P frigorifique	(Watt)				508	640	792	968	1171	1407
	2 P absorbée	(W)				387	438	487	536	587	640
	3 I absorbée	(A)				2.44	2.63	2.83	3.04	3.25	3.47

1 = cooling capacity 2 = power input 3 = current 4 = condensing temperature 5 = evaporating temperature

Nota : Tecumseh se réserve le droit de modifier les informations contenues dans ce document sans préavis.

Note : Tecumseh reserves the right to change information contained in this document without notification.

© 2021 Tecumseh Products Company
All rights reserved



Tecumseh

AE4440Y-GS1A	Tension GS : 220V 1~ 50 Hz / 60 Hz
---------------------	---

Les performances sont données dans les **conditions CECOMAF** :
 Condition Dew
 The performance data are in **CECOMAF conditions** :
 Dew Condition

Gaz aspirés : 32.0 °C
 Sous refroidissement : 0.0 K
 Return gas : 32.0 °C
 Subcooling : 0.0 K

© 2021 Tecumseh Products Company
 All rights reserved

50 Hz R513A

N°3174

4 T condensation	5 T évaporation	(°C)	-25	-20	-15	-10	-5	0	5	10	15
30	1 P frigorifique	(Watt)	337	440	560	701	865	1055	1272	1521	1802
	2 P absorbée	(W)	242	261	280	298	314	331	347	362	377
	3 I absorbée	(A)	2.80	2.80	2.80	2.81	2.83	2.87	2.93	3.02	3.14
40	1 P frigorifique	(Watt)		386	496	625	774	947	1146	1373	1631
	2 P absorbée	(W)		272	296	319	342	365	387	410	432
	3 I absorbée	(A)		2.77	2.81	2.84	2.89	2.94	3.01	3.09	3.21
50	1 P frigorifique	(Watt)			426	536	665	816	990	1190	1420
	2 P absorbée	(W)			309	338	368	397	427	456	486
	3 I absorbée	(A)			2.80	2.87	2.94	3.02	3.10	3.20	3.32
60	1 P frigorifique	(Watt)				447	550	672	816	985	1180
	2 P absorbée	(W)				357	393	429	466	503	540
	3 I absorbée	(A)				2.88	2.99	3.10	3.21	3.33	3.45

60 Hz R513A

N°3174

4 T condensation	5 T évaporation	(°C)	-25	-20	-15	-10	-5	0	5	10	15
30	1 P frigorifique	(Watt)	406	537	683	847	1033	1243	1481	1750	2052
	2 P absorbée	(W)	258	290	319	347	377	411	451	501	562
	3 I absorbée	(A)	2.14	2.21	2.28	2.36	2.46	2.59	2.74	2.93	3.16
40	1 P frigorifique	(Watt)		464	605	762	939	1138	1363	1617	1903
	2 P absorbée	(W)		299	336	370	403	439	479	527	583
	3 I absorbée	(A)		2.20	2.31	2.42	2.55	2.69	2.85	3.05	3.27
50	1 P frigorifique	(Watt)			509	649	807	985	1188	1417	1677
	2 P absorbée	(W)			347	391	432	473	517	565	621
	3 I absorbée	(A)			2.34	2.49	2.65	2.82	3.00	3.21	3.44
60	1 P frigorifique	(Watt)				529	658	805	975	1171	1395
	2 P absorbée	(W)				407	459	509	560	613	672
	3 I absorbée	(A)				2.56	2.76	2.96	3.17	3.40	3.64

1 = cooling capacity 2 = power input 3 = current 4 = condensing temperature 5 = evaporating temperature

Nota : Tecumseh se réserve le droit de modifier les informations contenues dans ce document sans préavis.

Note : Tecumseh reserves the right to change information contained in this document without notification.