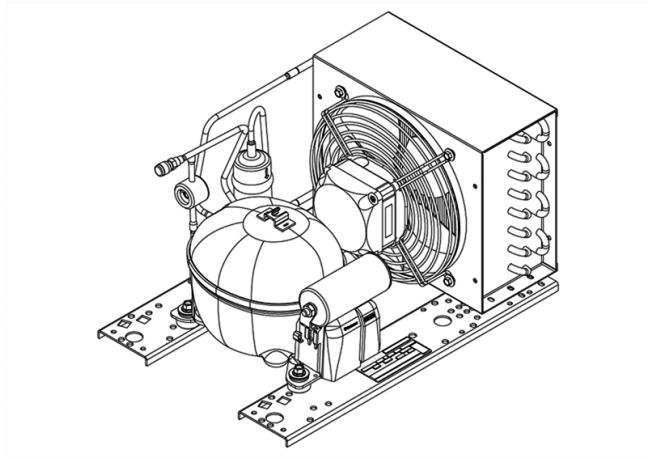


## UEMT6144Z



CE



**ENGINEERING CODE**  
594PAL012AA

**REFRIGERANT**  
R-134a

**POWER SUPPLY**  
220-240 V 50 Hz

**APPLICATION**  
HBP

**MOTOR TYPE**  
RSIR

**STANDARD**  
EN13215\_RG20

**COOLING CAPACITY**  
291 W

**EFFICIENCY**  
1.64 W/W

## DATA

## GENERAL DATA

Model	UEMT6144Z
-------	-----------

## ELECTRICAL DATA

Locked Rotor Amperage (LRA)	8.50 A
-----------------------------	--------

Rated Load Amperage (RLA)	1.48 A
---------------------------	--------

Maximum Overcurrent Protection (MOP)	3.33 A
--------------------------------------	--------

Minimum Current Ampacity (MCA)	1.9 A
--------------------------------	-------

## ACCESSORIES

Dryer	FILTER DRYER 6MM ODF	2730006
-------	----------------------	---------

Sightglass	SIGHT GLASS 6MM ODF	2464031
------------	---------------------	---------

## CONDENSING COMPONENTS

Compressor	EMT6144Z	M/HBP
------------	----------	-------

Condenser	3R8T	2451204
-----------	------	---------

Refrigerant	R-134a
-------------	--------

Expansion Device	C-V
------------------	-----

Fan Blade Diameter	200 mm
--------------------	--------

Fankit	10W 200/28/5B	1996581
--------	---------------	---------

## MECHANICAL DATA

Air Flow	300 m <sup>3</sup> /h
Height	226 mm
Shaft Power	10 W
Weight	14 Kg
Width	290 mm
Length	430 mm

## PERFORMANCE

### TESTED CONDITIONS

Tested Refrigerant	R-134a
Tested Application	HBP
Tested Standard	EN13215_RG20

### RATED POINTS

Ambient Temperature °C	Evaporating Temperature °C	Cooling Capacity W	Efficiency W/W	Consumo de Potencia W
32	-10	291	1.64	178

Test Condition: Subcooling 3 K, Return Gas 20 °C.

### PERFORMANCE CURVE

Ambient Temperature 25°C

Evaporating Temperature °C	Cooling Capacity W	Efficiency W/W	Consumo de Potencia W
-15	258	1.63	159
-5	388	2.07	188
0	466	2.28	204
5	553	2.49	222
10	649	2.69	241

Test Condition: Subcooling 3 K, Return Gas 20 °C.

### PERFORMANCE CURVE

Ambient Temperature 32°C

Evaporating Temperature °C	Cooling Capacity W	Efficiency W/W	Consumo de Potencia W
-15	233	1.42	164
-5	355	1.84	193
0	426	2.03	210
5	503	2.20	229
10	589	2.36	249

Test Condition: Subcooling 3 K, Return Gas 20 °C.

## PERFORMANCE CURVE

Ambient Temperature 43°C

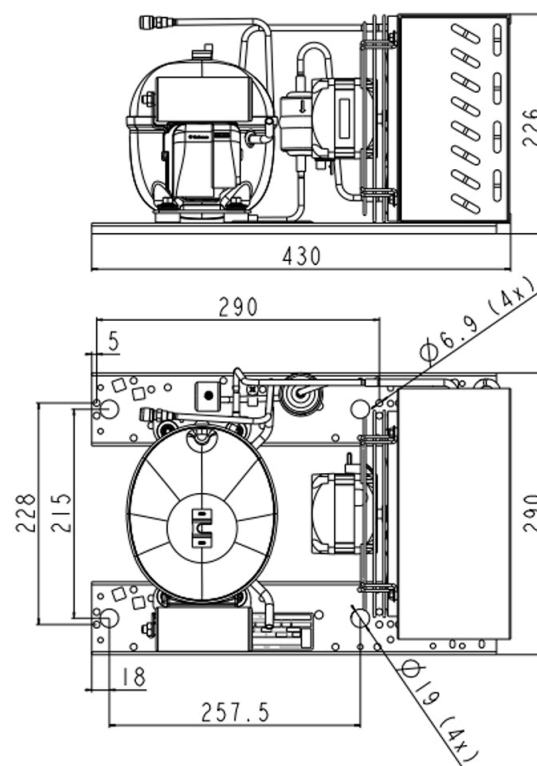
Evaporating Temperature °C	Cooling Capacity W	Efficiency W/W	Consumo de Potencia W
-15	193	1.11	173
-5	320	1.57	204
0	388	1.75	222
5	461	1.90	242

Test Condition: Subcooling 3 K, Return Gas 20 °C.

## ENVELOPE



## EXTERNAL DIMENSIONS



WIRING DIAGRAM

