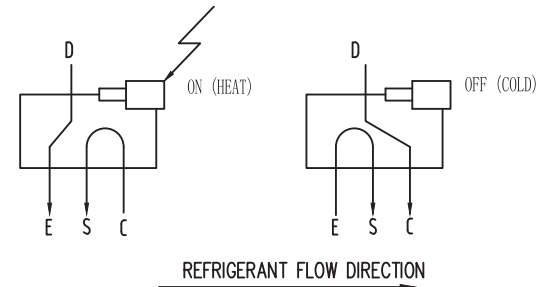
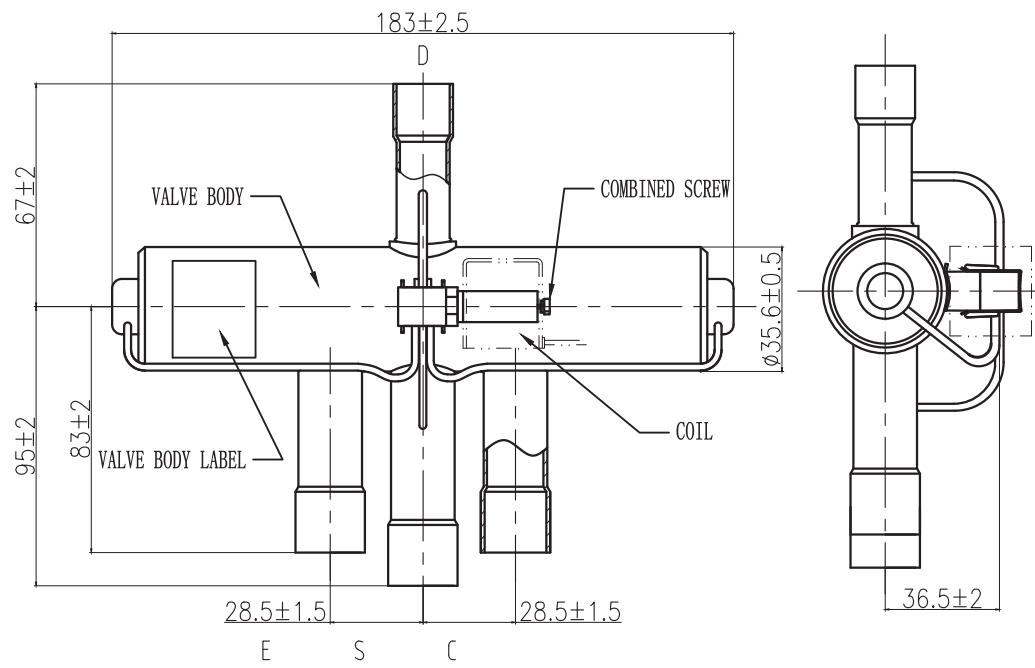


RV06ADXXXXXXXXX
RN-YMDSB

DN: XX
Max Pres.: 4.69MPa

Made in China

eliwell
by Schneider Electric



Installation instruction:	
A	To prevent dust & moisture entering the valves, tubes are provided with protection tube caps
B	Valve body should be protected with water or wet clothes during brazing, in order not to exceed 120 °C.
C	Recommended mounting position is horizontal also refer to technical literature

1	Max Capacity(R410A):	See part number table
2	Suitable refrigerant:	R410A, R407C, R22, R134a, R404A
3	DN:	Ø15.5mm
4	Max operating pressure:	4.69Mpa
5	Air tightness:	4.2Mpa
6	Burst pressure:	17.24Mpa
7	Internal leakage:	less than 4000CC/min(under normal temperature and 0.98Mpa air pressure)
8	Maximum operating pressure differential:	3.1Mpa
9	Minimum operating pressure differential:	0.1Mpa(ensure sufficient air flow during test)
10	Operating coil voltage:	not less than 85% of the rated voltage
11	Application temperature:	-20°C/+65°C
12	Environment:	humidity less than 95% RH
13	Recommended screw torque for coil:	2.0 Nm
14	Suitable media temperature:	-20/+121°C (defrosting moment -25°C)
15	Mechanical life:	>165000

MODEL-CODE NUMBER	TUBE DIAMETER (mm & tol.)						Max Capacity (R410A) [KW]
	E	S	C	Depth ESC	D	Depth D	
RV06AD12080000	Ø19.18	Ø19.18	Ø19.18	18	Ø12.83	13	23.95
RV06AD14080000	Ø22.35	Ø22.35	Ø22.35	22	Ø12.83	13	23.95
RV06AD14100000	Ø22.35	Ø22.35	Ø22.35	22	Ø16.03	16	23.95
RV06AD14120000	Ø22.35	Ø22.35	Ø22.35	22	Ø19.18	19	23.95

TUBE FIT DIA. I. D UNLESS NOTED, TOL ±0.1mm, TUBE DIT DEPTH TOL. ±1.3mm.

Label	No.	Modify File No.	Signature	Date
Designer			Standard	
Checker				
Verifier			Approval	
Processor			Date	

4-way Reversing Valve

RV06A

Marks		Weight	Ratio
B			
Total 1		Page 1	

ALL RV06A Part Numbers