

Compressor: D2-15.1Y
Refrigerant: R404A
Electrical supply: STANDARD
Performance data

Suction gas temperature = 20,0°C
 Evaporator superheating = 10,0K
 Subcooling = 0,0K
 Operating mode = normal

Legend:

 Additional cooling required

| Evaporating temperature | °C | -5,0 | -10,0 | -15,0 | -20,0 | -25,0 | -30,0 | -35,0 |
|--|----|-------|-------|-------|-------|-------|-------|-------|
| Condensing temperature = 20,0°C | | | | | | | | |
| Refrigerating capacity | kW | 13,56 | 11,21 | 9,15 | 7,37 | 5,84 | 4,54 | 3,45 |
| Power input | kW | 2,898 | 2,803 | 2,669 | 2,502 | 2,308 | 2,091 | 1,857 |
| COP | | 4,68 | 4,00 | 3,43 | 2,94 | 2,53 | 2,17 | 1,86 |
| Condensing temperature = 25,0°C | | | | | | | | |
| Refrigerating capacity | kW | 12,53 | 10,34 | 8,43 | 6,78 | 5,36 | 4,16 | 3,16 |
| Power input | kW | 3,143 | 3,013 | 2,846 | 2,648 | 2,425 | 2,182 | 1,924 |
| COP | | 3,99 | 3,43 | 2,96 | 2,56 | 2,21 | 1,91 | 1,64 |
| Condensing temperature = 30,0°C | | | | | | | | |
| Refrigerating capacity | kW | 11,53 | 9,51 | 7,75 | 6,22 | 4,92 | 3,81 | 2,89 |
| Power input | kW | 3,385 | 3,219 | 3,020 | 2,791 | 2,539 | 2,269 | 1,987 |
| COP | | 3,41 | 2,95 | 2,57 | 2,23 | 1,94 | 1,68 | 1,45 |
| Condensing temperature = 35,0°C | | | | | | | | |
| Refrigerating capacity | kW | 10,58 | 8,72 | 7,10 | 5,69 | 4,50 | 3,48 | 2,64 |
| Power input | kW | 3,623 | 3,423 | 3,190 | 2,930 | 2,650 | 2,354 | 2,047 |
| COP | | 2,92 | 2,55 | 2,22 | 1,94 | 1,70 | 1,48 | 1,29 |
| Condensing temperature = 40,0°C | | | | | | | | |
| Refrigerating capacity | kW | 9,67 | 7,96 | 6,48 | 5,20 | 4,10 | 3,18 | 2,40 |
| Power input | kW | 3,858 | 3,622 | 3,357 | 3,066 | 2,757 | 2,435 | 2,104 |
| COP | | 2,51 | 2,20 | 1,93 | 1,69 | 1,49 | 1,31 | 1,14 |
| Condensing temperature = 45,0°C | | | | | | | | |
| Refrigerating capacity | kW | 8,79 | 7,23 | 5,88 | 4,72 | 3,73 | 2,89 | 2,18 |
| Power input | kW | 4,088 | 3,818 | 3,519 | 3,199 | 2,861 | 2,512 | 2,158 |
| COP | | 2,15 | 1,89 | 1,67 | 1,48 | 1,30 | 1,15 | 1,01 |
| Condensing temperature = 50,0°C | | | | | | | | |
| Refrigerating capacity | kW | 7,95 | 6,53 | 5,31 | 4,27 | 3,37 | 2,62 | 1,97 |
| Power input | kW | 4,315 | 4,010 | 3,678 | 3,327 | 2,961 | 2,586 | 2,207 |
| COP | | 1,84 | 1,63 | 1,44 | 1,28 | 1,14 | 1,01 | 0,89 |
| Condensing temperature = 55,0°C | | | | | | | | |
| Refrigerating capacity | kW | 7,12 | 5,86 | 4,76 | 3,83 | 3,03 | 2,35 | - |
| Power input | kW | 4,538 | 4,197 | 3,833 | 3,451 | 3,056 | 2,655 | - |
| COP | | 1,57 | 1,40 | 1,24 | 1,11 | 0,99 | 0,88 | - |

Compressor: D2-15.1Y

Refrigerant: R404A

Electrical supply: STANDARD

Performance data

Suction gas temperature = 20,0°C
 Evaporator superheating = 10,0K
 Subcooling = 0,0K
 Operating mode = normal

Legend:

Additional cooling required

Evaporating temperature °C -40,0 -45,0

Condensing temperature = 20,0°C

| | | | |
|------------------------|----|-------|-------|
| Refrigerating capacity | kW | 2,57 | 1,86 |
| Power input | kW | 1,612 | 1,362 |
| COP | | 1,59 | 1,36 |

Condensing temperature = 25,0°C

| | | | |
|------------------------|----|-------|-------|
| Refrigerating capacity | kW | 2,34 | 1,68 |
| Power input | kW | 1,657 | 1,387 |
| COP | | 1,41 | 1,21 |

Condensing temperature = 30,0°C

| | | | |
|------------------------|----|-------|-------|
| Refrigerating capacity | kW | 2,13 | 1,52 |
| Power input | kW | 1,698 | 1,408 |
| COP | | 1,25 | 1,08 |

Condensing temperature = 35,0°C

| | | | |
|------------------------|----|-------|-------|
| Refrigerating capacity | kW | 1,94 | 1,37 |
| Power input | kW | 1,737 | 1,427 |
| COP | | 1,12 | 0,96 |

Condensing temperature = 40,0°C

| | | | |
|------------------------|----|-------|-------|
| Refrigerating capacity | kW | 1,76 | 1,23 |
| Power input | kW | 1,772 | 1,442 |
| COP | | 0,99 | 0,85 |

Condensing temperature = 45,0°C

| | | | |
|------------------------|----|-------|-------|
| Refrigerating capacity | kW | 1,59 | 1,10 |
| Power input | kW | 1,803 | 1,454 |
| COP | | 0,88 | 0,75 |

Condensing temperature = 50,0°C

| | | | |
|------------------------|----|-------|---|
| Refrigerating capacity | kW | 1,43 | - |
| Power input | kW | 1,831 | - |
| COP | | 0,78 | - |

Condensing temperature = 55,0°C

| | | | |
|------------------------|----|---|---|
| Refrigerating capacity | kW | - | - |
| Power input | kW | - | - |
| COP | | - | - |


Compressor: D2-15.1Y

Refrigerant: R404A

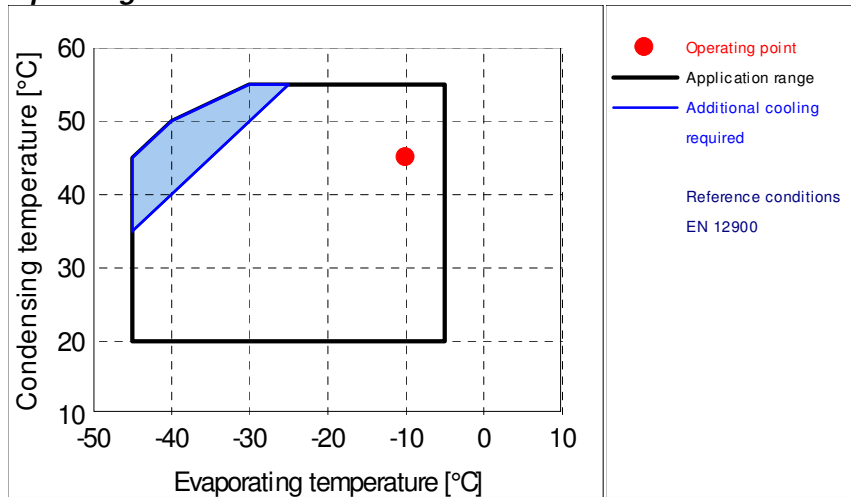
Electrical supply: STANDARD

Performance data

Suction gas temperature = 20,0°C
 Evaporator superheating = 10,0K
 Subcooling = 0,0K
 Operating mode = normal

Legend:  Additional cooling required

Operating limits



Compressor: D2-15.1Y

Refrigerant: R404A

Electrical supply: STANDARD

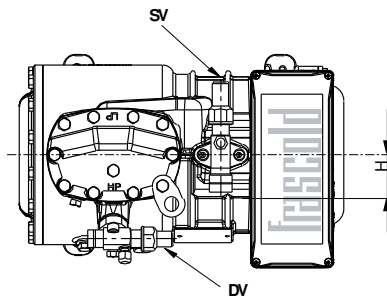
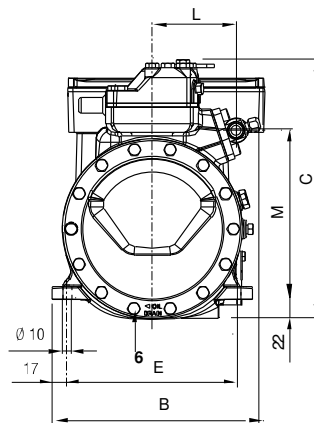
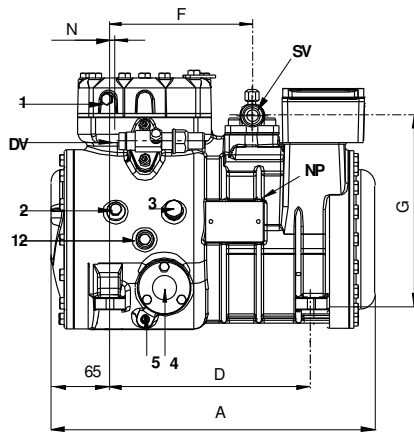
Performance data

| | |
|-------------------------|----------|
| Suction gas temperature | = 20,0°C |
| Evaporator superheating | = 10,0K |
| Subcooling | = 0,0K |
| Operating mode | = normal |

Legend:

Additional cooling required

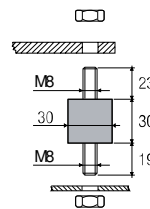
Dimensions



Supporto antivibrante

Vibration absorber

Vibrationsabsorber



D

Legend:

| | |
|--------------------------|----------|
| Suction Valve | Ḃ22,2 mm |
| Discharge valve | Ḃ15,8 mm |
| A: Length | 369mm |
| B: Width | 242mm |
| C: Height | 294mm |
| D: Base mounting | 234mm |
| E: Base mounting | 194mm |
| F: Suction Valve | 165mm |
| G: Suction Valve | 221mm |
| H: Suction Valve | 42mm |
| L: Discharge valve | 94mm |
| M: Discharge valve | 192mm |
| N: Discharge valve | 13mm |
| 1: High pressure plug | |
| 2: Low pressure plug | |
| 3: oil charge plug | |
| 4: oil level sight glass | |
| 5: crankcase heater seat | |
| 6: oil drain plug | |
| 12: oil return plug | |
| DV: Discharge valve | |
| SV: Suction Valve | |
| NP: Nameplate | |

Compressor: D2-15.1Y

Refrigerant: R404A

Electrical supply: STANDARD

Performance data

| | |
|-------------------------|----------|
| Suction gas temperature | = 20,0°C |
| Evaporator superheating | = 10,0K |
| Subcooling | = 0,0K |
| Operating mode | = normal |

Legend:

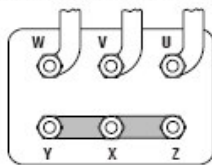
Additional cooling required

Technical data

| | |
|---|---|
| Make | Reciprocating/ semi-hermetic/ one stage |
| Nominal operating frequency | 50 Hz |
| Nominal compressor speed @50 Hz | 1450 1/min |
| Nominal displacement @50 Hz | 15,36 ml/h |
| Number of pistons | 2 |
| Net weight | 45 kg |
| Lubricant | FRASCOLD POE32 |
| Oil charge | 1,2 l |
| Locked rotor current (LRA) | 35,9 A |
| Maximum allowed operating current (MRA) | 8,4 A |
| Sound power level -10/45°C R404A @50Hz | 66,5 dB(A) |
| Sound power level -35/40°C R404A @50Hz | 69,0 dB(A) |

Motor connections

Serie **A-B-C-D-F-Q** Series



400V
3Ph
50Hz
DOL-STAR

Compressor: D2-15.1Y

Refrigerant: R404A

Electrical supply: STANDARD

Performance data

Suction gas temperature = 20,0°C
 Evaporator superheating = 10,0K
 Subcooling = 0,0K
 Operating mode = normal

Legend:

Additional cooling required

Characteristics

Polynomial coefficients according to EN 12900

| Coefficient | Refrigerating capacity | Power input | Mass flow |
|----------------------|------------------------|--------------|-------------|
| C1 | 2,16382E+04 | 1,78889E+03 | 0,00000E+00 |
| C2*S | 7,22620E+02 | -2,57644E+01 | 0,00000E+00 |
| C3*D | -2,95100E+02 | 5,89504E+01 | 0,00000E+00 |
| C4*S _c | 7,88801E+00 | -1,17811E+00 | 0,00000E+00 |
| C5*S*D | -8,21208E+00 | 1,55205E+00 | 0,00000E+00 |
| C6*D _c | 1,30291E+00 | -4,47412E-02 | 0,00000E+00 |
| C7*S _i | 2,51100E-02 | -7,42089E-03 | 0,00000E+00 |
| C8*S _c *D | -6,59377E-02 | 8,83836E-03 | 0,00000E+00 |
| C9*S*D _c | 1,39525E-02 | -1,78340E-04 | 0,00000E+00 |
| C10*D _i | -4,58021E-03 | -2,78889E-04 | 0,00000E+00 |

Reference conditions: Ambient temperature: 32,0 °C
 Suction gas temperature: 20,0 °C
 Liquid subcooling: 0,0 K
 Nominal operating frequency: 50 Hz

Accessories

| Accessories | Model | Technical data | |
|----------------------------------|---------------------------|-----------------------|----------|
| 1 Motor protector | ECA01 | 230V AC | |
| 2 Rubber damper | T00SSA1 | 30X30 45SH M8 A-B-C | |
| 1 Crankcase heater | T00CH13 A-D | 230V | optional |
| 2 Head fan | SZ_FM1 (standard cooling) | 230V - 1ph - 50/60 Hz | optional |
| 3 Motor protector INT69 DIAGNOSE | T00ECA01D | 115V-230V 50/60 Hz | optional |
| 4 USB adpter for INT69 DIAGNOSE | T00EC57 | | optional |