



Compressor
Voltage Code : XC

FH2480P-XC

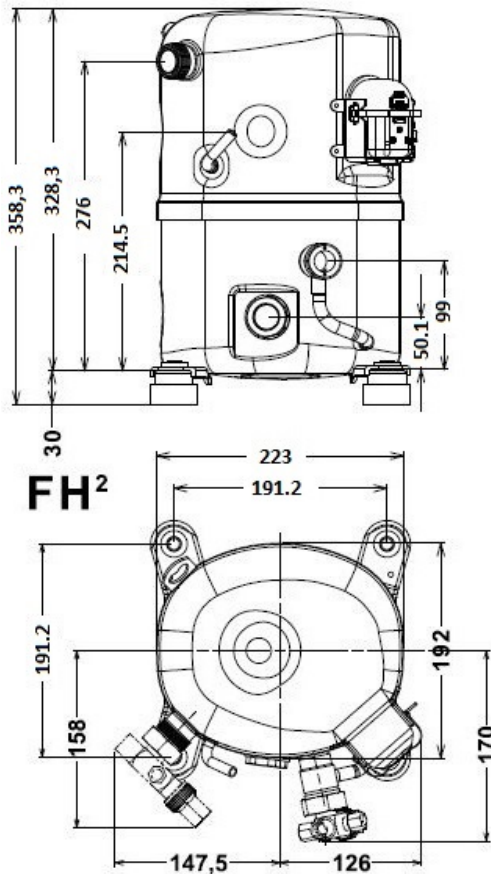
Low Temp. Commercial (BP)

220 - 240V 1~ 50 Hz

R455A / R454C

FH2480P-XC3A

Conditions	Frequency	Nominal Cooling Capacity		Sound Power ISO3745 / ISO 3743-1
		Watts	BTU/h	
CECOMAF / R455A	50 Hz	1510	5150	72 dBA
CECOMAF / R454C	50 Hz	1288	4393	72 dBA



Displacement (cc)	54,3
Net Weight (Kg)	29.0
Oil Quantity (cc)	1140.0
Oil Type	Polyolester
Expansion Device	Capillary_Tube/Expansion_Valve
Cooling	Fan
Main Winding (Ohm)	1.03
Start Winding (Ohm)	2.1
Current	
RLA (A)	4,2
MCC (A)	16,2
LRA (A)	58
Electrical Equipment	CSR
Overload	Interne
Start Capacitor	161 µF / 330 V
Run Capacitor	45 µF / 400 V
Potential Relay	RVA4AL**
Pick Up	223/252V
Drop Out	60/121V
Refrigerating connection for	
Suction Tube	15.9 (5/8")
Discharge Tube	12.7 (1/2")
Process Tube	6.35 (1/4")

* CECOMAF : T°Cond. 55.0°C / T°Evap. -25.0°C / T°Return gas temp.. 32.0°C
T°Subcooling. 0.0K

Certificates :



Note : Tecumseh reserves the right to change information contained in this document without notification.



Tecumseh

FH2480P-XC	Tension XC : 220 - 240V 1~ 50 Hz
-------------------	---

Les performances sont données dans les **conditions CECOMAF** :
 Condition Mid

The performance data are in **CECOMAF conditions** :
 Mid Condition

Gaz aspirés : 32.0 °C
 Sous refroidissement : 0.0 K

Return gas : 32.0 °C
 Subcooling : 0.0 K

© 2022 Tecumseh Products Company
 All rights reserved

50 Hz R455A

N°3479

4 T condensation	5 T évaporation	(°C)	-40	-35	-30	-25	-20	-15	-10
30	1 P frigorifique	(Watt)	1038	1569	2212	2981	3893	4963	6207
	2 P absorbée	(W)	839	1009	1173	1338	1510	1697	1905
	3 I absorbée	(A)	3.92	4.68	5.44	6.19	6.94	7.68	8.42
40	1 P frigorifique	(Watt)	660	1134	1702	2381	3186	4132	5238
	2 P absorbée	(W)	751	968	1176	1380	1590	1810	2047
	3 I absorbée	(A)	3.53	4.49	5.45	6.41	7.36	8.31	9.25
50	1 P frigorifique	(Watt)		710	1206	1795	2494	3320	4288
	2 P absorbée	(W)		855	1114	1366	1620	1880	2155
	3 I absorbée	(A)		4.01	5.17	6.33	7.48	8.63	9.77
60	1 P frigorifique	(Watt)			729	1232	1828	2534	3368
	2 P absorbée	(W)			974	1282	1587	1896	2215
	3 I absorbée	(A)			4.58	5.94	7.29	8.64	9.98

50 Hz R454C

N°3480

4 T condensation	5 T évaporation	(°C)	-40	-35	-30	-25	-20	-15	-10
30	1 P frigorifique	(Watt)	826	1299	1877	2577	3413	4401	5558
	2 P absorbée	(W)	715	870	1021	1172	1329	1494	1673
	3 I absorbée	(A)	3.36	4.04	4.73	5.42	6.11	6.78	7.43
40	1 P frigorifique	(Watt)	495	925	1446	2073	2822	3709	4751
	2 P absorbée	(W)	627	821	1011	1203	1401	1609	1831
	3 I absorbée	(A)	2.96	3.81	4.69	5.59	6.50	7.41	8.31
50	1 P frigorifique	(Watt)		543	1001	1550	2208	2990	3912
	2 P absorbée	(W)		706	938	1173	1413	1665	1932
	3 I absorbée	(A)		3.32	4.36	5.43	6.54	7.66	8.79
60	1 P frigorifique	(Watt)			561	1028	1589	2260	3058
	2 P absorbée	(W)			800	1077	1362	1658	1971
	3 I absorbée	(A)			3.77	5.00	6.27	7.58	8.91

1 = cooling capacity 2 = power input 3 = current 4 = condensing temperature 5 = evaporating temperature

Nota : Tecumseh se réserve le droit de modifier les informations contenues dans ce document sans préavis.

Note : Tecumseh reserves the right to change information contained in this document without notification.