



Compressor
Voltage Code : XC

FH4538Z-XC

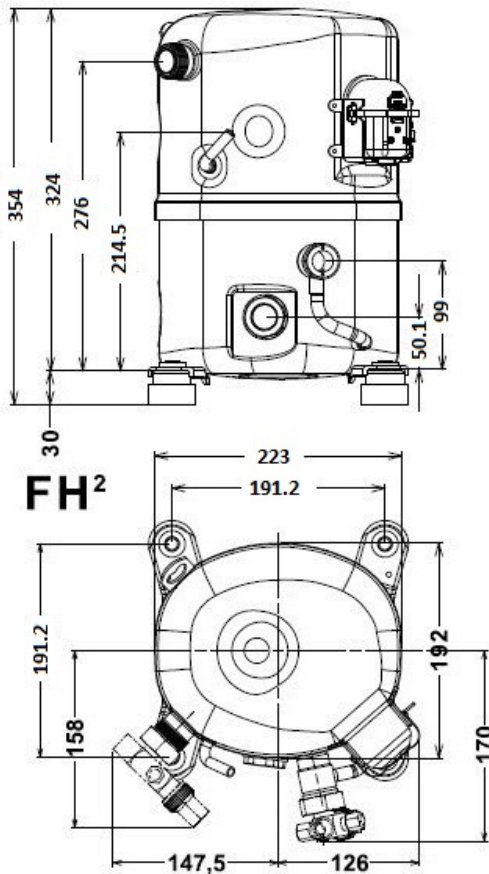
High Temp. Commercial (HP)

220 - 240V 1~ 50 Hz

R452A / R404A / R448A / R449A

FH4538Z-XC3A

Conditions	Frequency	Nominal Cooling Capacity		Sound Power ISO3745 / ISO 3743-1
		Watts	BTU/h	
CECOMAF / R452A	50 Hz	7829	26698	75 dBA
CECOMAF / R404A	50 Hz	7664	26133	75 dBA
CECOMAF / R448A	50 Hz	7799	26595	75 dBA
CECOMAF / R449A	50 Hz	7808	26625	75 dBA



Displacement (cc)	63
Net Weight (Kg)	32.0
Oil Quantity (cc)	1140.0
Oil Type	Polyolester
Expansion Device	Capillary_Tube/Expansion_Valve
Cooling	Fan
Main Winding (Ohm)	0.79
Start Winding (Ohm)	2.71
Current	
RLA (A)	16
MCC (A)	26
LRA (A)	78
Electrical Equipment	CSR
Overload	Interne
Start Capacitor	145 µF / 330 V
Run Capacitor	50 µF / 400 V
Potential Relay	RVA4G**
Pick Up	180/195V
Drop Out	40/105V
Refrigerating connection for	
Suction Tube	22.2 (7/8")
Discharge Tube	12.7 (1/2")
Process Tube	6.35 (1/4")

* CECOMAF : T°Cond. 55.0°C / T°Evap. 5.0°C / T°Return gas temp.. 32.0°C
T°Subcooling. 0.0K

Certificates :



Note : Tecumseh reserves the right to change information contained in this document without notification.



Tecumseh

FH4538Z-XC	Tension XC : 220 - 240V 1~ 50 Hz
-------------------	---

Les performances sont données dans les **conditions CECOMAF** :
 Condition Dew
 The performance data are in **CECOMAF conditions** :
 Dew Condition

Gaz aspirés : 32.0 °C
 Sous refroidissement : 0.0 K
 Return gas : 32.0 °C
 Subcooling : 0.0 K

© 2021 Tecumseh Products Company
 All rights reserved

50 Hz R452A

N°User-321

4 T condensation	5 T évaporation	(°C)	-25	-20	-15	-10	-5	0	5	10	15
30	1 P frigorifique	(Watt)		4116	5317	6714	8334	10206	12357	14816	17611
	2 P absorbée	(W)		1773	1947	2098	2228	2337	2428	2503	2563
	3 I absorbée	(A)		8.57	9.30	9.98	10.6	11.2	11.6	12.0	12.3
40	1 P frigorifique	(Watt)			4427	5675	7105	8746	10627	12778	15229
	2 P absorbée	(W)			2094	2310	2503	2675	2827	2962	3080
	3 I absorbée	(A)			9.96	10.9	11.8	12.5	13.2	13.8	14.3
50	1 P frigorifique	(Watt)				4576	5798	7190	8783	10608	12697
	2 P absorbée	(W)				2459	2722	2963	3183	3384	3568
	3 I absorbée	(A)				11.6	12.8	13.9	14.9	15.8	16.5
60	1 P frigorifique	(Watt)					4448	5574	6862	8344	10057
	2 P absorbée	(W)					2885	3201	3495	3769	4025
	3 I absorbée	(A)					13.4	14.9	16.3	17.6	18.7

50 Hz R404A

N°User-320

4 T condensation	5 T évaporation	(°C)	-25	-20	-15	-10	-5	0	5	10	15
30	1 P frigorifique	(Watt)	3261	4265	5440	6810	8401	10240	12351	14763	17501
	2 P absorbée	(W)	1638	1833	2003	2148	2267	2360	2425	2463	2472
	3 I absorbée	(A)	8.17	8.90	9.61	10.3	10.9	11.3	11.7	11.9	11.9
40	1 P frigorifique	(Watt)		3496	4551	5759	7144	8736	10559	12643	15016
	2 P absorbée	(W)		1922	2152	2360	2544	2705	2841	2952	3037
	3 I absorbée	(A)		9.33	10.3	11.2	12.0	12.7	13.4	13.9	14.2
50	1 P frigorifique	(Watt)			3613	4641	5805	7132	8650	10390	12383
	2 P absorbée	(W)			2248	2516	2764	2991	3196	3378	3538
	3 I absorbée	(A)			10.7	11.9	13.0	14.1	15.0	15.8	16.5
60	1 P frigorifique	(Watt)				3494	4420	5466	6663	8043	9642
	2 P absorbée	(W)				2637	2946	3237	3508	3760	3992
	3 I absorbée	(A)				12.3	13.8	15.1	16.4	17.6	18.6

1 = cooling capacity 2 = power input 3 = current 4 = condensing temperature 5 = evaporating temperature

Nota : Tecumseh se réserve le droit de modifier les informations contenues dans ce document sans préavis.

Note : Tecumseh reserves the right to change information contained in this document without notification.



Tecumseh

FH4538Z-XC	Tension XC : 220 - 240V 1~ 50 Hz
-------------------	---

Les performances sont données dans les conditions CECOMAF :	Gaz aspirés :	32.0 °C
Condition Dew	Sous refroidissement :	0.0 K
The performance data are in CECOMAF conditions :	Return gas :	32.0 °C
Dew Condition	Subcooling :	0.0 K

50 Hz R448A (*)											
											N°User-323
4 T condensation	5 T évaporation	(°C)	-25	-20	-15	-10	-5	0	5	10	15
30	1 P frigorifique	(Watt)	2708	3672	4813	6160	7743	9592	11737	14208	17034
	2 P absorbée	(W)	1484	1665	1828	1972	2094	2193	2266	2311	2326
	3 I absorbée	(A)	7.37	8.05	8.73	9.39	9.98	10.5	10.9	11.1	11.1
40	1 P frigorifique	(Watt)		3018	4056	5265	6674	8315	10217	12410	14927
	2 P absorbée	(W)		1751	1970	2173	2358	2522	2664	2780	2870
	3 I absorbée	(A)		8.47	9.37	10.2	11.1	11.8	12.5	13.0	13.3
50	1 P frigorifique	(Watt)			3265	4324	5548	6969	8615	10521	12718
	2 P absorbée	(W)			2063	2328	2578	2811	3025	3217	3386
	3 I absorbée	(A)			9.81	11.0	12.1	13.2	14.2	15.0	15.7
60	1 P frigorifique	(Watt)				3383	4411	5599	6980	8586	10452
	2 P absorbée	(W)				2442	2761	3066	3356	3627	3878
	3 I absorbée	(A)				11.3	12.8	14.3	15.7	16.9	18.0

50 Hz R449A (*)											
											N°User-322
4 T condensation	5 T évaporation	(°C)	-25	-20	-15	-10	-5	0	5	10	15
30	1 P frigorifique	(Watt)	2710	3675	4816	6164	7748	9599	11745	14217	17044
	2 P absorbée	(W)	1484	1665	1828	1972	2094	2193	2266	2311	2326
	3 I absorbée	(A)	7.37	8.05	8.73	9.39	9.98	10.5	10.9	11.1	11.1
40	1 P frigorifique	(Watt)		3020	4060	5270	6680	8322	10225	12420	14938
	2 P absorbée	(W)		1751	1970	2173	2358	2522	2664	2780	2870
	3 I absorbée	(A)		8.47	9.37	10.2	11.1	11.8	12.5	13.0	13.3
50	1 P frigorifique	(Watt)			3268	4329	5554	6976	8624	10531	12730
	2 P absorbée	(W)			2063	2328	2578	2811	3025	3217	3386
	3 I absorbée	(A)			9.81	11.0	12.1	13.2	14.2	15.0	15.7
60	1 P frigorifique	(Watt)				3387	4416	5606	6989	8596	10464
	2 P absorbée	(W)				2442	2761	3066	3356	3627	3878
	3 I absorbée	(A)				11.3	12.8	14.3	15.7	16.9	18.0

1 = cooling capacity 2 = power input 3 = current 4 = condensing temperature 5 = evaporating temperature

(*) Veuillez vous référer strictement aux Recommandations d'Utilisation et Bulletins Marketing Tecumseh du fait de la température de refoulement élevée pour les applications LBP.
 (*) Due to very high discharge temperature especially on LBP conditions, please strictly refer to Tecumseh Guidelines & Marketing Bulletin when using this refrigerant.

Nota : Tecumseh se réserve le droit de modifier les informations contenues dans ce document sans préavis.

Note : Tecumseh reserves the right to change information contained in this document without notification.

© 2021 Tecumseh Products Company
All rights reserved