

Compressor
Voltage Code : FZ

AE4440U-FZ1A

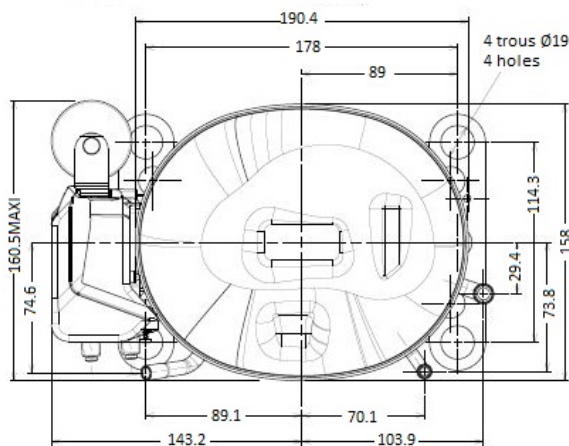
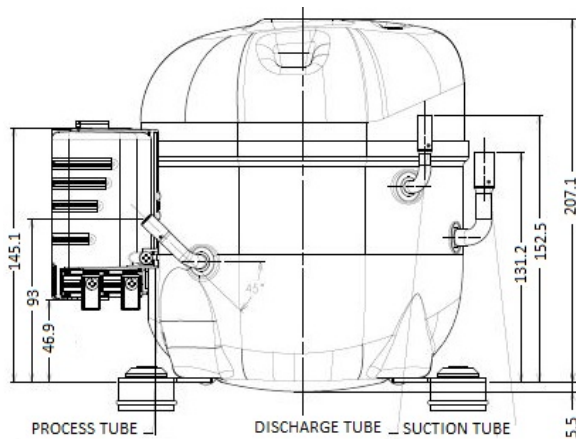
High Temp. Commercial (HP)

220 - 240V 1~ 50 Hz

R290

AE4440U-FZ1A_BR

Conditions	Frequency	Nominal Cooling Capacity		Sound Power ISO3745 / ISO 3743-1
		Watts	BTU/h	
EN12900 / R290	50 Hz	895	3052	59 dBA



* EN12900 : T°Cond. 50.0°C / T°Evap. 5.0°C / T°Return gas temp.. 20.0°C
T°Subcooling. 0.0K

Certificates :



Displacement (cc)	8.02
Net Weight (Kg)	10.3
Oil Quantity (cc)	280.0
Oil Type	Polyolester
Expansion Device	Capillary_Tube/Expansion_Valve
Cooling	Fan
Main Winding (Ohm)	8.24
Start Winding (Ohm)	24.11
Current	
RLA (A)	2.38
LRA (A)	12.5
Electrical Equipment	
	CSIR
Overload	
Time Check	MRA6000
Open Temp	6.5s - 16s / 09.2 A
Close Temp	120° C
	52° C
Start Capacitor	
	64 µF / 250 V
Current Relay	
Pick Up	9660D***-143
Drop Out	6.80A
	5.75A
Refrigerating connection for OD	
Suction Tube	9.5 (3/8")
Discharge Tube	6.35 (1/4")
Process Tube	6.35 (1/4")

Note : Tecumseh reserves the right to change information contained in this document without notification.



Tecumseh

AE4440U-FZ1A	Tension FZ : 220 - 240V 1~ 50 Hz
---------------------	---

Les performances sont données dans les conditions EN12900 :	Gaz aspirés :	20.0 °C
Condition Dew	Sous refroidissement :	0.0 K
The performance data are in EN12900 conditions :	Return gas :	20.0 °C
Dew Condition	Subcooling :	0.0 K

50 Hz R290											
N°3059											
4 T condensation	5 T évaporation	(°C)	-25	-20	-15	-10	-5	0	5	10	15
30	1 P frigorifique	(Watt)	346	442	555	687	842	1020	1224	1458	1722
	2 P absorbée	(W)	220	236	250	262	271	275	275	269	257
	3 I absorbée	(A)	1.73	1.79	1.83	1.86	1.89	1.90	1.90	1.89	1.87
40	1 P frigorifique	(Watt)		383	482	597	729	882	1058	1259	1486
	2 P absorbée	(W)		256	275	293	309	321	330	334	333
	3 I absorbée	(A)		1.82	1.89	1.95	2.00	2.04	2.07	2.09	2.10
50	1 P frigorifique	(Watt)			411	508	620	748	895	1063	1255
	2 P absorbée	(W)			299	322	344	364	380	393	402
	3 I absorbée	(A)			1.96	2.05	2.13	2.20	2.25	2.30	2.34
60	1 P frigorifique	(Watt)				424	515	618	737	873	1029
	2 P absorbée	(W)				353	379	405	429	450	468
	3 I absorbée	(A)				2.15	2.25	2.35	2.44	2.52	2.58



© 2019 Tecumseh Products Company
All rights reserved

1 = cooling capacity 2 = power input 3 = current 4 = condensing temperature 5 = evaporating temperature

Nota : Tecumseh se réserve le droit de modifier les informations contenues dans ce document sans préavis.

Note : Tecumseh reserves the right to change information contained in this document without notification.