

EMC40CLT



**ENGINEERING CODE**  
701NA92



**REFRIGERANT**  
R-600a



**POWER SUPPLY**  
220-240 V 50 Hz



**APPLICATION**  
LBP



**MOTOR TYPE**  
RSCR



**STANDARD**  
EN12900



**COOLING CAPACITY**  
62 W



**EFFICIENCY**  
1.42 W/W



DATA

GENERAL DATA

Model	EMC40CLT
Type	Hermetic Reciprocating
Technology	ON/OFF
Compressor Application	LBP
Expansion Device	Capillary Tube
Compressor Cooling	Static/220
Starting Torque	LST
Plant	SLOVAKIA

ELECTRICAL DATA

Start Winding Resistance	18.8 Ω at 25°C
Run Winding Resistance	41.0 Ω at 25°C
Locked Rotor Amperage (LRA) 50Hz	3.4 A
Rated Load Amperage (LMBP) at 50 Hz	0.5 A
Rated Load Amperage (HBP) at 50 Hz	0.6 A

## MECHANICAL DATA

Displacement	7.23 cm <sup>3</sup>
Oil Charge	150 ml
Oil Type	ALQUILB
Oil Viscosity	ISO5
Weight	7.7 Kg

## ELECTRICAL COMPONENTS

Run Capacitor	4.0 µf/350 V
CSR CSIR BOX	No
Starting Device Description	TSD2-220V
Overload Protection	4TM189KFBYY-73

## PERFORMANCE

### TESTED CONDITIONS

Tested Refrigerant	R-600a
Tested Application	LBP
Tested Standard	EN12900
Tested Cooling	Static
Tested Voltage	220 V
Max Refrigerant Charge	150 g
Refrigerant Temperature	Dew

### RATED POINTS

Condensing Temperature °C	Evaporating Temperature °C	Cooling Capacity W	Efficiency W/W	Power Consumption W	Current A	Gas Flow Rate kg/h
40	-35	62	1.42	44	-	0.75

Test Condition: Subcooling 0 K, Return Gas 20 °C. Data are an indication of performance based simulation.

### PERFORMANCE CURVE

Condensing Temperature 35°C

Evaporating Temperature °C	Cooling Capacity W	Efficiency W/W	Power Consumption W	Current A	Gas Flow Rate kg/h
-35	67	1.55	44	-	0.79
-30	91	1.78	51	-	1.06
-25	120	2.06	58	-	1.40
-20	156	2.38	65	-	1.82
-15	198	2.75	72	-	2.33
-10	249	3.16	79	-	2.92

Test Condition: Subcooling 0 K, Return Gas 20 °C. Data are an indication of performance based simulation.

**PERFORMANCE CURVE**

Condensing Temperature 45°C

Evaporating Temperature °C	Cooling Capacity W	Efficiency W/W	Power Consumption W	Current A	Gas Flow Rate kg/h
-35	56	1.29	44	-	0.72
-30	77	1.47	52	-	0.98
-25	102	1.68	61	-	1.30
-20	134	1.90	70	-	1.71
-15	172	2.15	80	-	2.20
-10	217	2.41	90	-	2.79

Test Condition: Subcooling 0 K, Return Gas 20 °C. Data are an indication of performance based simulation.

**PERFORMANCE CURVE**

Condensing Temperature 55°C

Evaporating Temperature °C	Cooling Capacity W	Efficiency W/W	Power Consumption W	Current A	Gas Flow Rate kg/h
-30	63	1.20	52	-	0.88
-25	85	1.36	62	-	1.19
-20	112	1.53	73	-	1.58
-15	145	1.70	85	-	2.05
-10	185	1.88	98	-	2.62

Test Condition: Subcooling 0 K, Return Gas 20 °C. Data are an indication of performance based simulation.

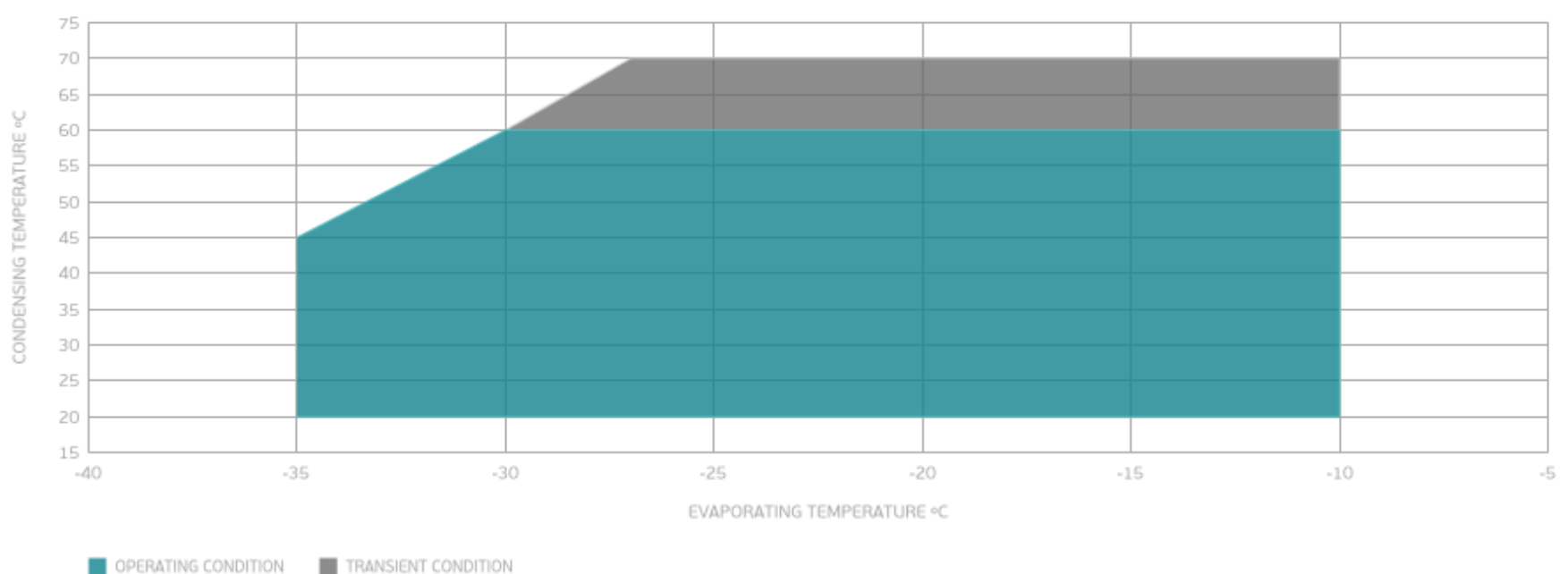
**PERFORMANCE CURVE**

Condensing Temperature 65°C

Evaporating Temperature °C	Cooling Capacity W	Efficiency W/W	Power Consumption W	Current A	Gas Flow Rate kg/h
-25	68	1.07	63	-	1.07
-20	91	1.21	75	-	1.43
-15	119	1.34	89	-	1.88
-10	153	1.47	104	-	2.43

Test Condition: Subcooling 0 K, Return Gas 20 °C. Data are an indication of performance based simulation.

**ENVELOPE**



External

## EXTERNAL CHARACTERISTICS

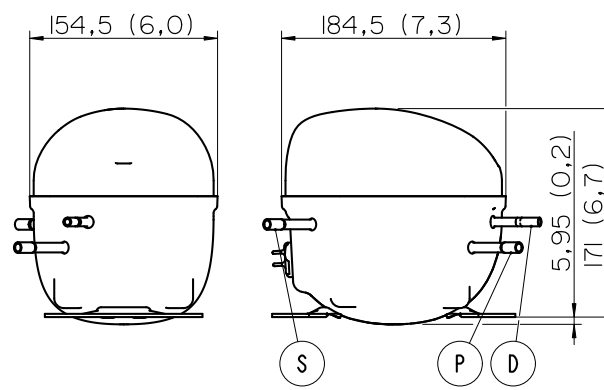
<b>Base Plate</b>		SMALL
<b>Tray Holder</b>		NO

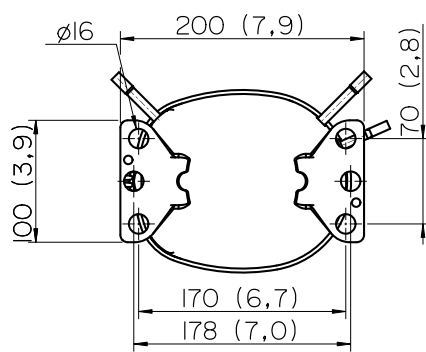
Connector	Internal Diameter	Shape	Material
<b>Suction</b>	6.1 mm	SLANTED 42° UP + 45° TO BACK	COPPER
<b>Discharge</b>	5.1 mm	SLANTED 0° UP + 45° TO BACK	COPPER
<b>Process</b>	6.1 mm	SLANTED 45° UP + 45° TO BACK	COPPER

## EXTERNAL DIMENSIONS

### SHELL



### BASE



### FENCE

