

COMPRESSOR

Displacement (cm ³)	16.03
Diameter (mm)	32.6
Stroke (mm)	19.2
Net Weight (Kg)	16.5
Oil type	ISO VG 46 ESTER
Oil charge (cm ³)	650

MOTOR

Approximate Power (CV)	1/2
Voltage/Frequency (V/Hz)	220V 50Hz
Voltage range (V)	187-264
Code	82.200
Type	CSIR
Phase number	1 PH
Locked rotor current (A)	20.0
Main W. resist. at 25°C (Ω)	2.7
Start W. resist. at 25°C (Ω)	17.15

APPLICATION

Application	Low back pressure
Refrigerant	R404A
Evaporating (°C)	-40 to -10
Expansion	Capillar/Valve
Comp. cooling	Fan cooled
Max. ambient temp. (°C)	43

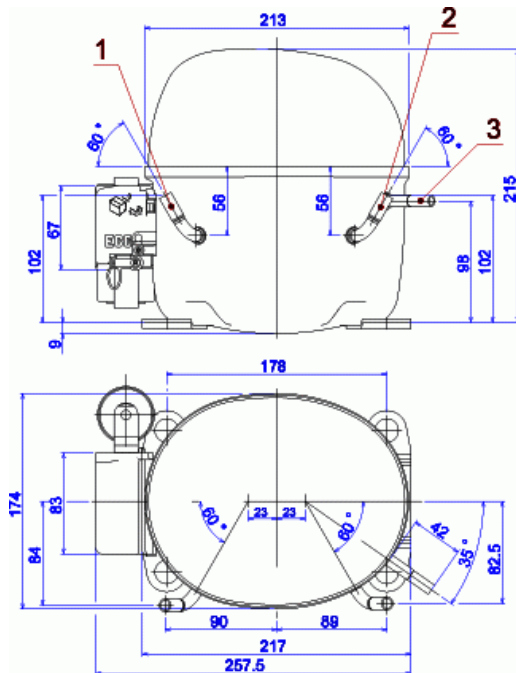
NOMINAL PERFORMANCE	CYCLE A	CYCLE B
Cooling capacity (kcal/h)	418	620
Input power (W)	558	590
EER (kcal/Wh)	0.74	1.05
COP (W/W)	0.87	1.22
Current (A)	3.98	4.09

TEST CONDITIONS

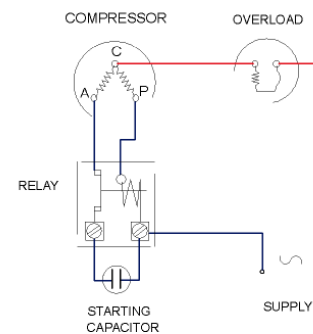
Evaporating temp. (°C)	-25.0	-23.3
Condensing temp. (°C)	55.0	55.0
Liq.t. entering expan. (°C)	55.0	32.0
Ambient t. and return (°C)	32.0	32.0
Tens/Freq (V/Hz)	220V 50Hz	220V 50Hz

ELECTRICAL COMPONENTS

Relay	2014 170.	
Pick-Up (A)	12,10	
Drop-Out (A)	10,30	
Protector	MRA38132	T0103
Current (A)	16.2	15.8
Time check (seg)	7.5-14	7.5-14
Disc temp. (Open/Close) (°C)	105.0 / 52.0	120.0 / 62.0
Starting capacitor (μF/V)/F/V)	64- 77 / 330	

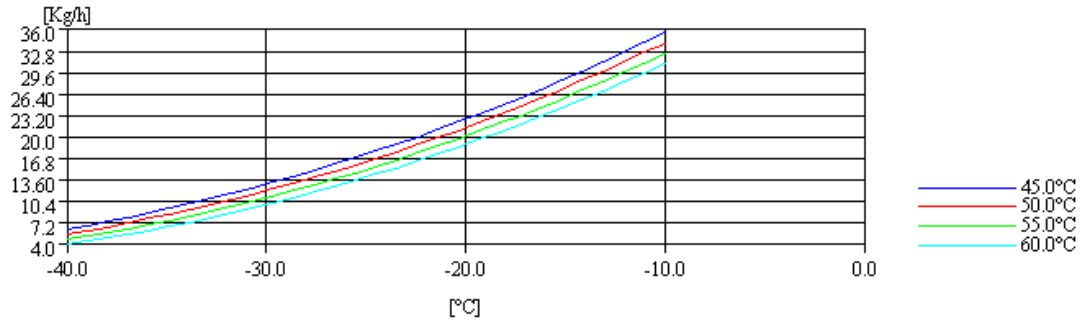
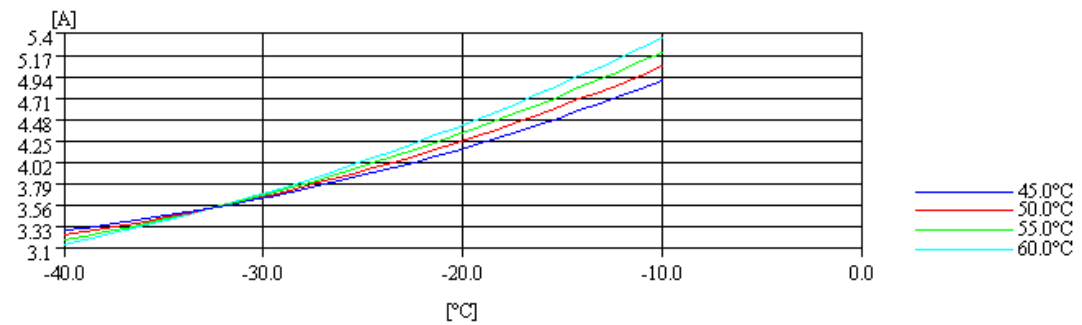
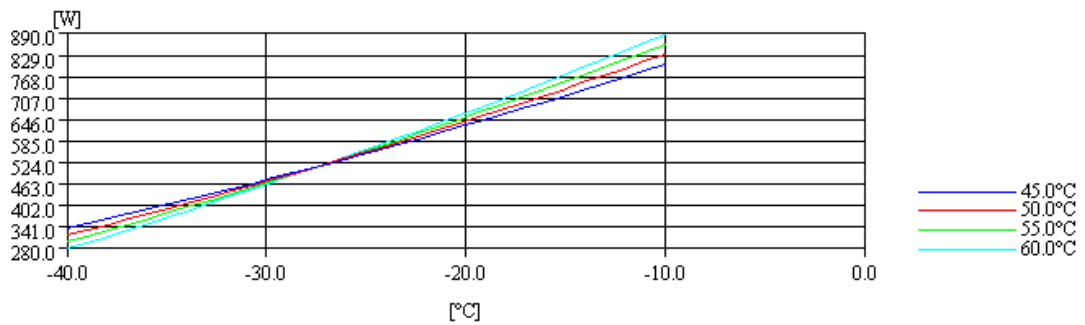
DIMENSIONS AND ELECTRICAL DIAGRAM


DESIGNATION	INTERNAL DIAM. (MM)	
1	Service	9.7
2	Suction	9.7
3	Discharge	6.5

CSIR


TEST CONDITIONS

Voltage/frequency	220V 50Hz
Ambient t. and return	32 °C
Liq.t. entering expan.	Subcooling at 32 °C

MASS FLOW

INTENSITY

CONSUMPTION

COOLING CAPACITY
