

Refrigerant	R134a
High Side Properties:	
Condensing Temperature, °C	45.00
Abs. Condensing Pressure, bar	11.60
Dew Point, °C	45.00
Bubble Point, °C	45.00
Saturated vapour enthalpy, kJ/kg	422.00
Specific volume of saturated vapour, dm ³ /kg	17.40
Low Side Properties:	
Evaporating Temperature, °C	10.00
Evaporating Abs. Pressure, bar	4.15
Dew Point, °C	10.00
Bubble Point, °C	10.00
With vapour at, °C	20.00
Specific volume, dm ³ /kg	52.10
Enthalpy, kJ/kg	414.00
Operating Conditions:	
Evaporating Temperature, °C	10.00
Condensing Temperature, °C	45.00
Suction Return Temperature, °C	20.00
Subcooling, K	1.00
Compressor Selected	YH33K1E-TFD

PERFORMANCE AT SPECIFIED OPERATING POINT
YH33K1E-TFD Data at 50 Hz

Cooling Capacity, kW	33.40
Power, kW	8.15
COP	4.10
Current at 400 V, A	14.19
Suction Mass Flow, g/s	222.00
Heating Capacity, kW	41.20
Isentropic Eff., %	61.22

COMPRESSOR MECHANICAL AND PHYSICAL DATA

Displacement @ 50 Hz, m ³ /h	42.4
Length/Width, mm	284/289
Height, mm	551
Net Weight, kg	68.2
Stub Suction, inch	1 3/8
Stub Discharge, inch	7/8
Oil Quantity, l	3.58
Oil type (original charge)	POE RL32-3MAF
Base mounting (hole dia), mm	190 x 190 (0)
Sound Pressure @ 1m (HT), dBA	71
Sound Power (HT), dBA	82
Sound Power with Sound Shell (HT), dBA	71
Sound Conditions (HT, Temperatures: Evap./Cond./Suction at freq./speed)	-7 / 50 / 3 °C at 50 Hz
PED Category	3
Max. Low Side Internal Free Volume, l	12.6
Max. High Side Internal Free Volume, l	1.5
Max. Internal Free Volume, l	14.1
High Side PS gauge, bar	50
Low Side PS gauge, bar	30.4
Low Side TS Max., °C	55
Low Side TS Min., °C	-35
High Side TS Max., °C	150
High Side TS Min., °C	-35
Refrigerant's GWP	1430
Refrigerant's classification	A1

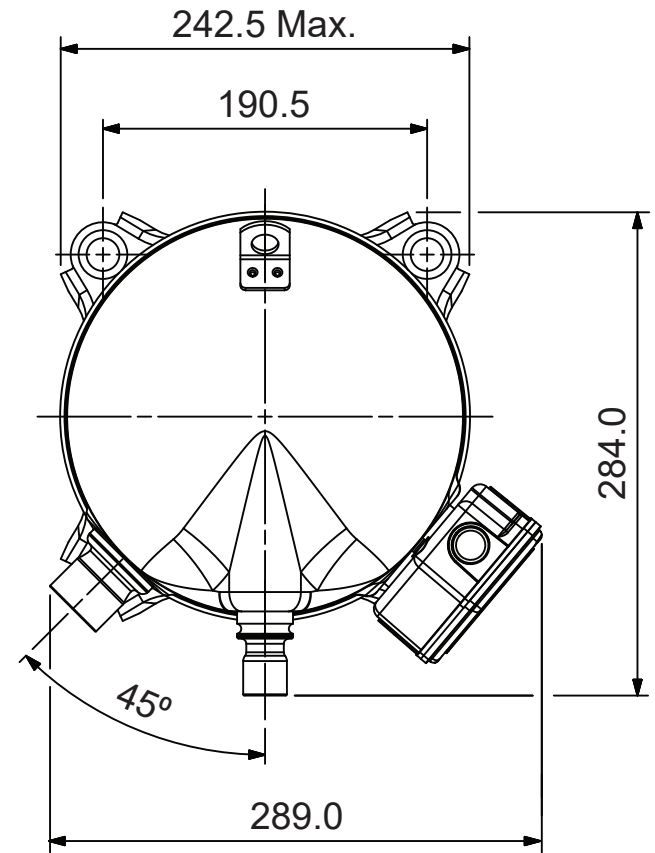
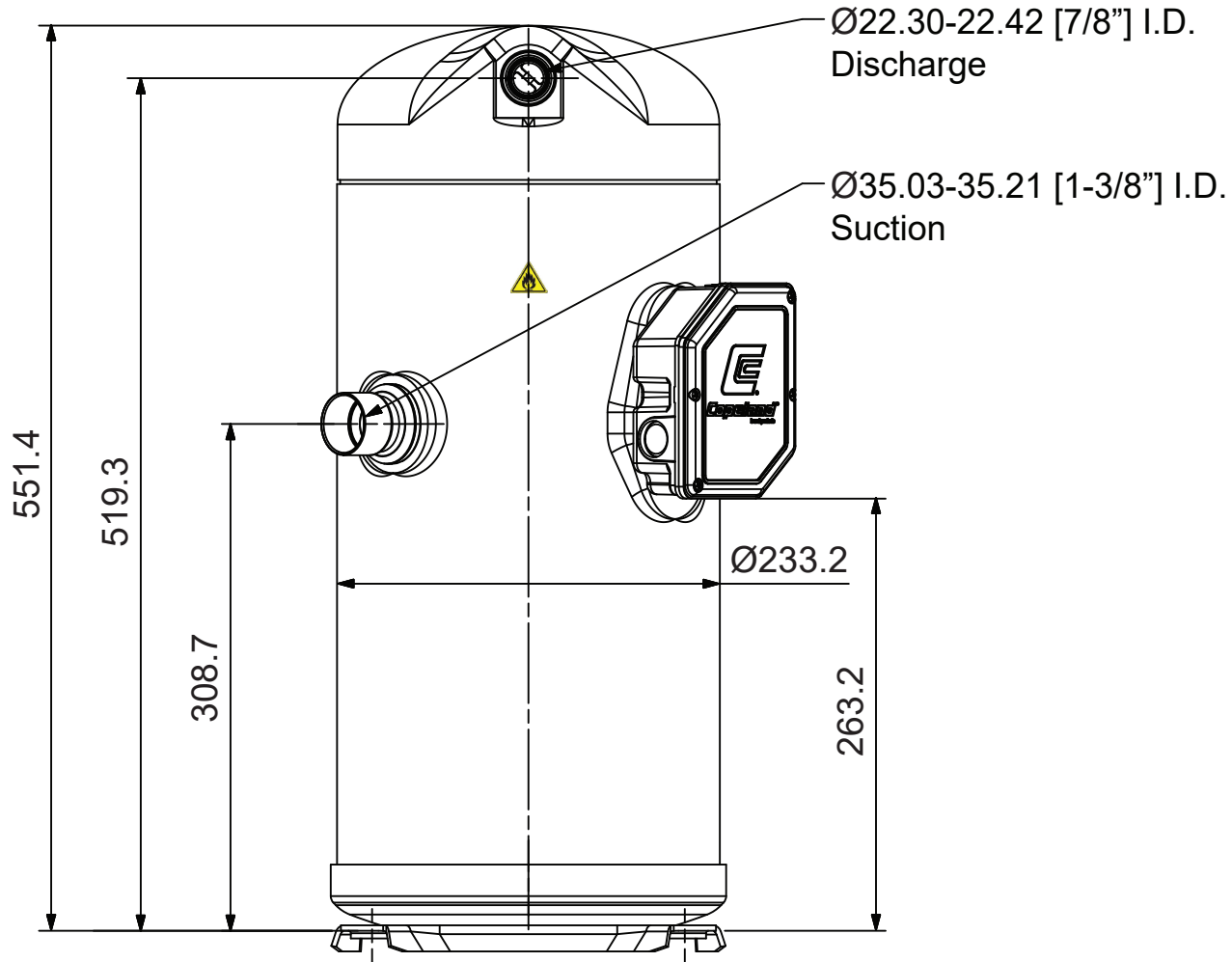
COMPRESSOR ELECTRICAL DATA (380-420 V / 3~ / 50 Hz)

Maximum Operating Current, A	34
Locked Rotor Current, A	141
Winding Resistance, ohm	0.99
Default Enclosure Class	IP 54 (IEC 34)

ACCESSORIES INCLUDED**ACCESSORIES OPTIONAL**

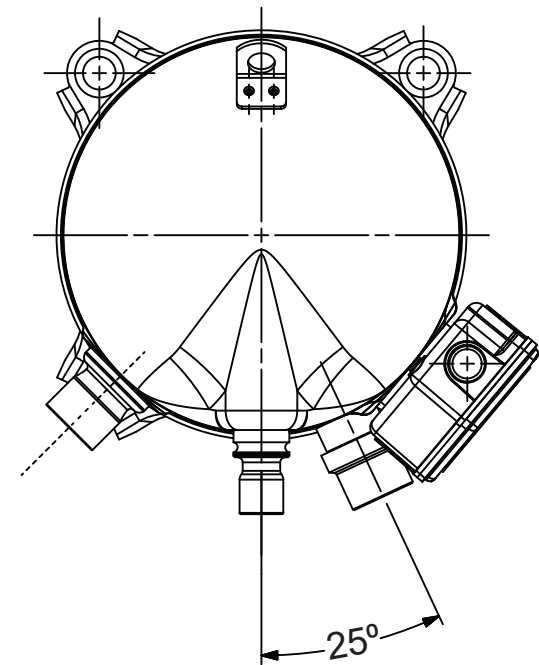
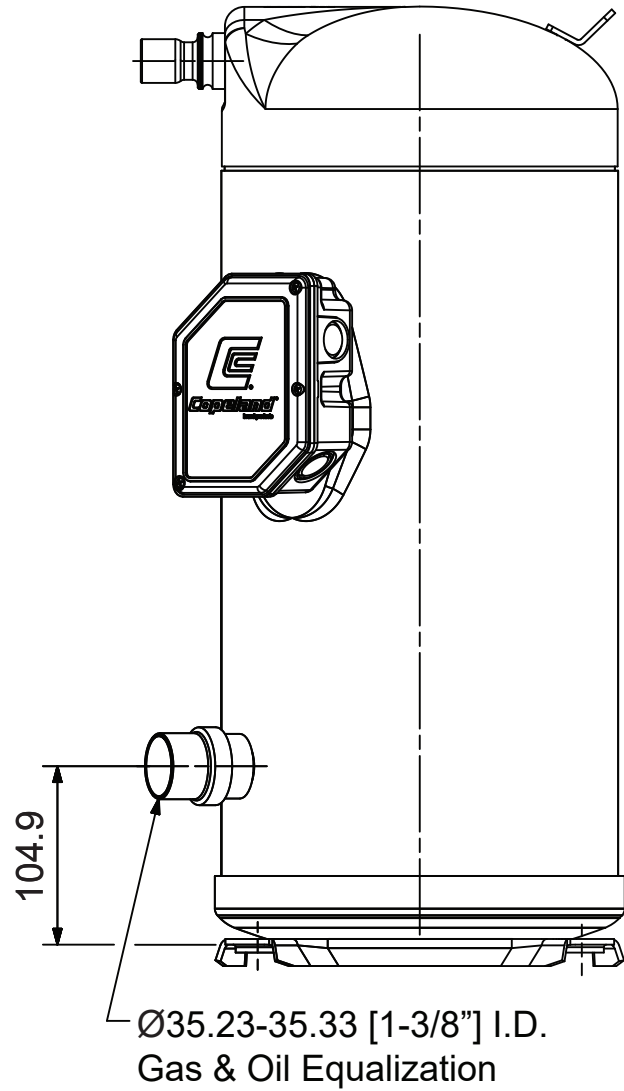
Compressor Model
YH23/28/33/38K1E/K1G

BOM GCZ: stub suction & discharge, no mounting parts, t-box IP54



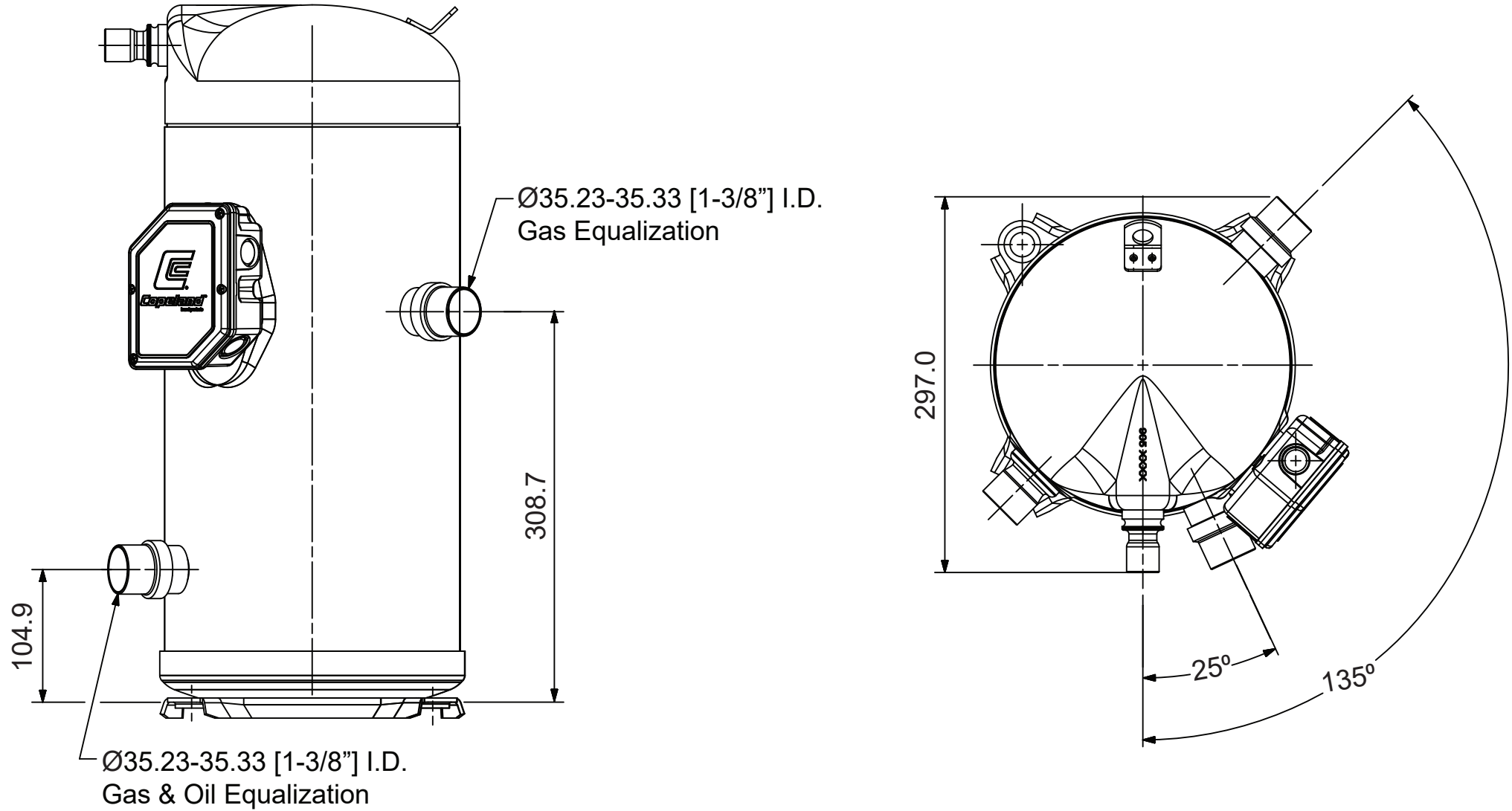
Compressor Model
YH23/28/33/38K1E/K1G

BOM GCY: stub suction & discharge, stub oil & gas equalization, no mounting parts, t-box IP54



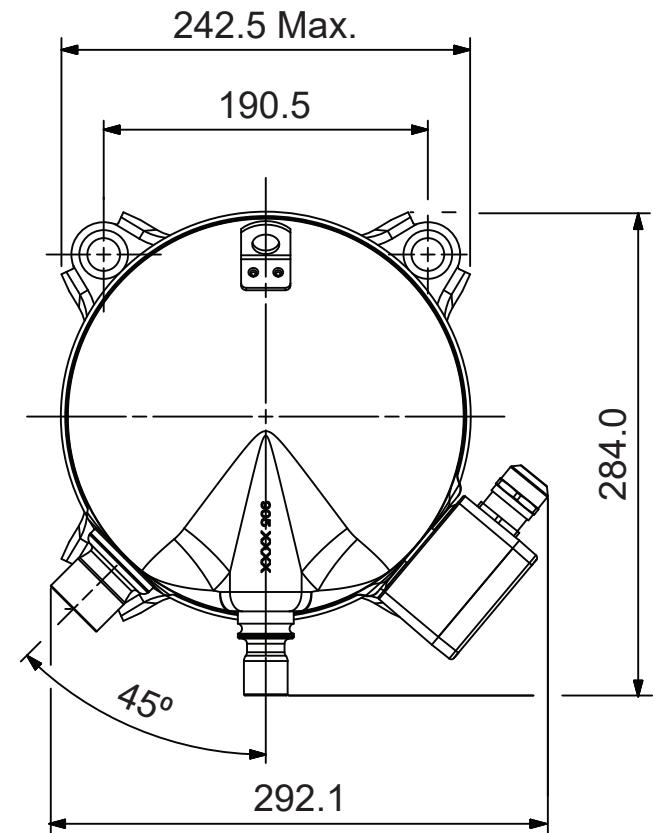
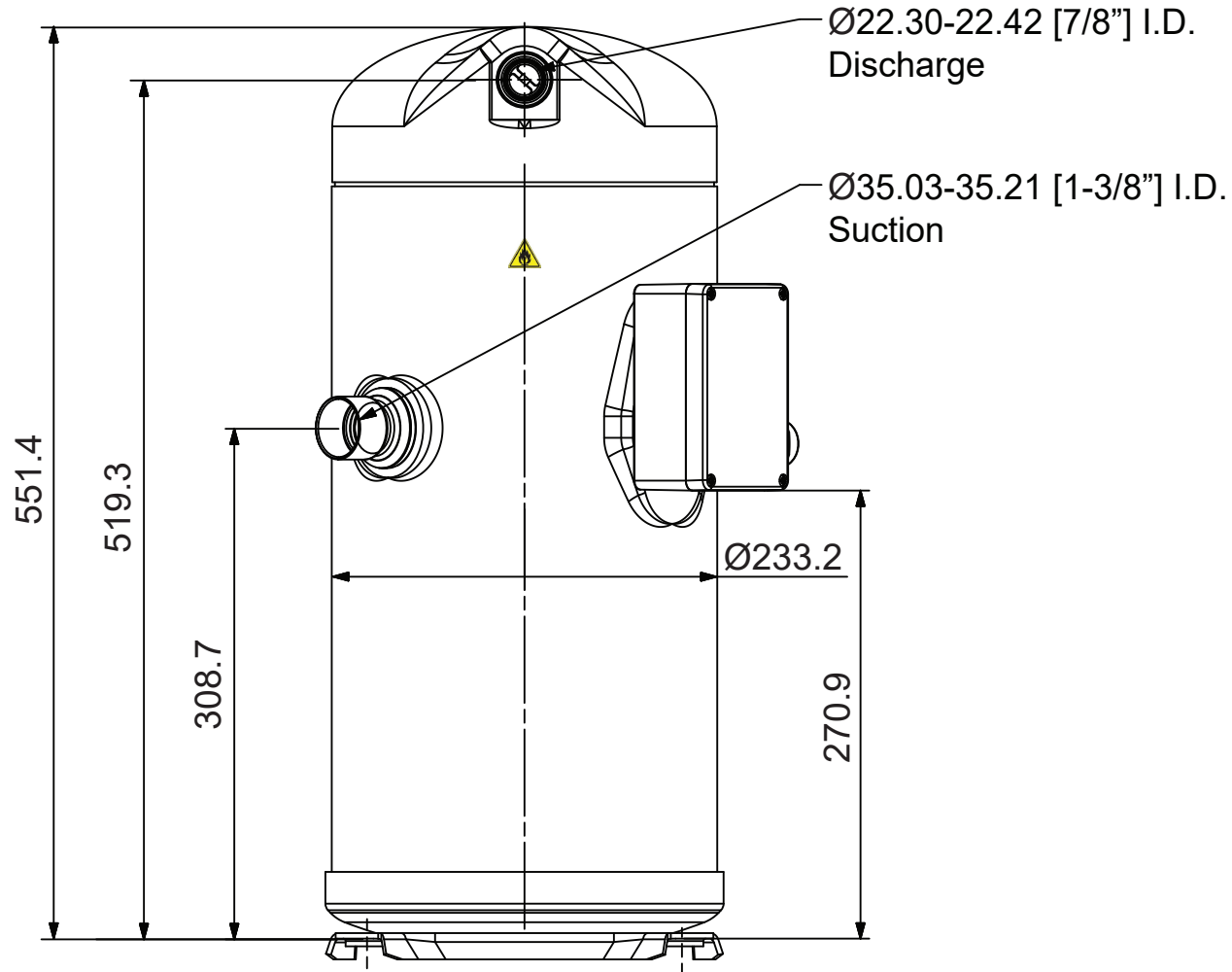
Compressor Model
YH23/28/33/38K1E/K1G

BOM GCW: stub suction & discharge, stub oil & gas equalization, gas equalization,
no mounting parts, t-box IP54



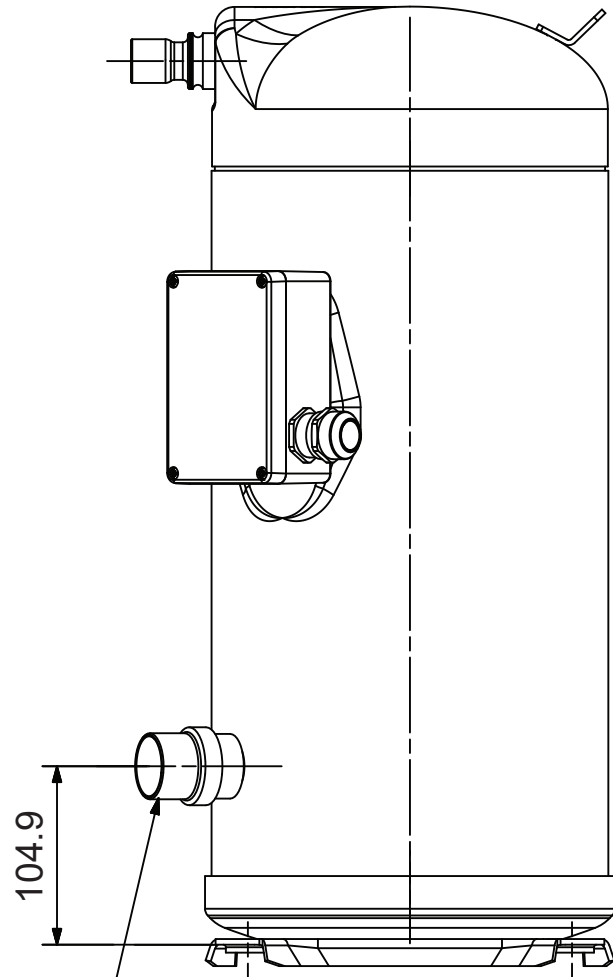
Compressor Model
YH23/28/33/38K1E/K1G

BOM JCE: stub suction & discharge, no mounting parts, t-box IP65



Compressor Model
YH23/28/33/38K1E/K1G

BOM JCD: stub suction & discharge, stub oil & gas equalization, no mounting parts, t-box IP65



Ø35.23-35.33 [1-3/8"] I.D.
Gas & Oil Equalization

